



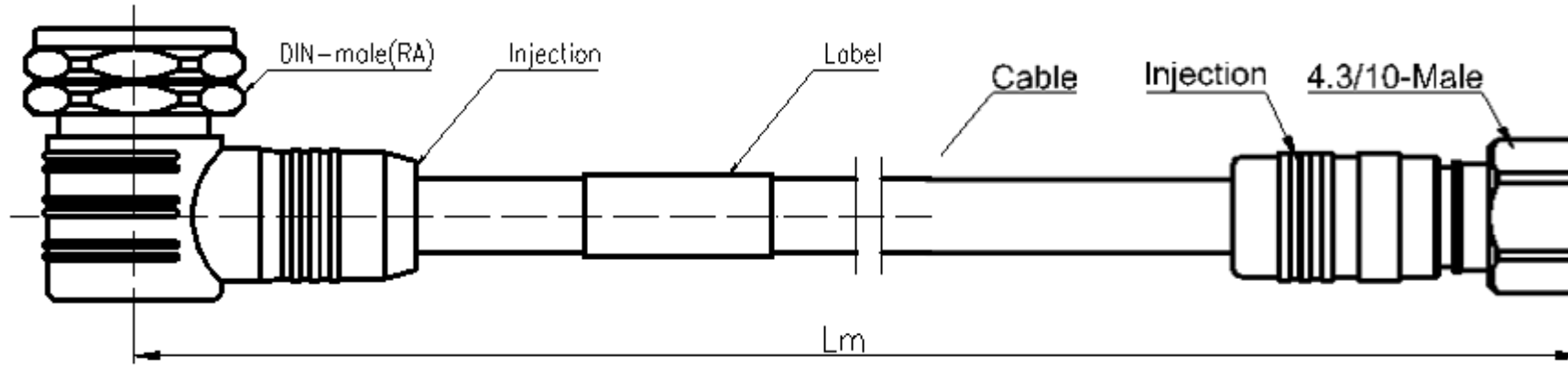
## TECHNICAL SPECIFICATION

XXQJ15144

4310M LCF1/2 Lm jumper

Rev:A/0

### 1. Figure



### 2. Product Description

|                      |   |  |
|----------------------|---|--|
| 1). Cable Type:      | HRCAY-50-12(1/2" Flexible)                |  |
| 2) Jumper Length:    | Lm (By Need)                              |  |
| 3). Cable :          |   |  |
| Inner Conductor      | Copper-Clad Aluminum Wire                 |  |
| Dielectric           | Physical Foam Polyethylene                |  |
| Outer Conductor      | Corrugated Copper Tube                    |  |
| Jacket               | Black PE                                  |  |
| 3). Connectors       |   |  |
| ConnectorA、 B        | 4.3/10 Straight male                      | 7/16 Right Angle male <b>or</b><br>7/16 Straight male <b>or</b><br>4.3/10 Right angle male <b>or</b><br>4.3/10 Straight male |
| Inner Conductor Pin  | Brass/Silver Plating                      | Brass/Silver Plating   |
| Body&Outer Conductor | Brass/Trimetal Plating                    | Brass/Trimetal Plating   |
| Insulator            | PTFE                                      | PTFE   |
| Gasket               | Silicon Rubber                            | Silicon Rubber   |
| Nut                  | Brass/Nikel Plating                       | Brass/Nikel Plating  |
| Insertion Loss       | ≤0.05 dB                                  | ≤0.05 dB   |
| Return Loss          | ≤-35 dB @ DC~ 1GHz<br>≤-32 dB @ 1~ 2.7GHz | ≤-35 dB @ DC~ 1GHz<br>≤-32 dB @ 1~ 2.7GHz  |

### 3. Electrical Characteristics

|   |                     |
|---|---------------------|
| Characteristics Impedance                 | 50 Ω                |
| Minimum Bending Radius (mm)               | ≤ 70                |
| Frequency Range                           | DC~2.7GHz           |
| Insulation Resistance                     | ≥5000MΩ             |
| Voltage Between Inner And Outer Conductor | 2500V rms (DC,1Min) |
| Log Mag @DC~3.0GHz                        | ≤0.15*L+0.1dB       |
| Return Loss @DC~3.0GHz                    | ≤-23dB              |
| PIM3                                      | ≤-159dBc            |
| Peak Power                                | ≥0.7 kW             |

### 4. Environmental and Mechanical Specifications

|                       |  |
|-----------------------|--|
| Durability (matings)  | ≥500 cycles                              |
| Tensile strength      | ≥400 N                                   |
| Vibration Test Method | As per std:IEC 60068-2-6/GB/T 17738.1    |
| Temperature Range     | -20°C to +85°C                           |
| Relative Humidity     | 0 to 95%                                 |
| RoHS                  | Compliant                                |
| Sealing Class         | IP68, with waterproof boots, outdoor use |
| Weight                | ≥ 0.2 kg/m                               |